

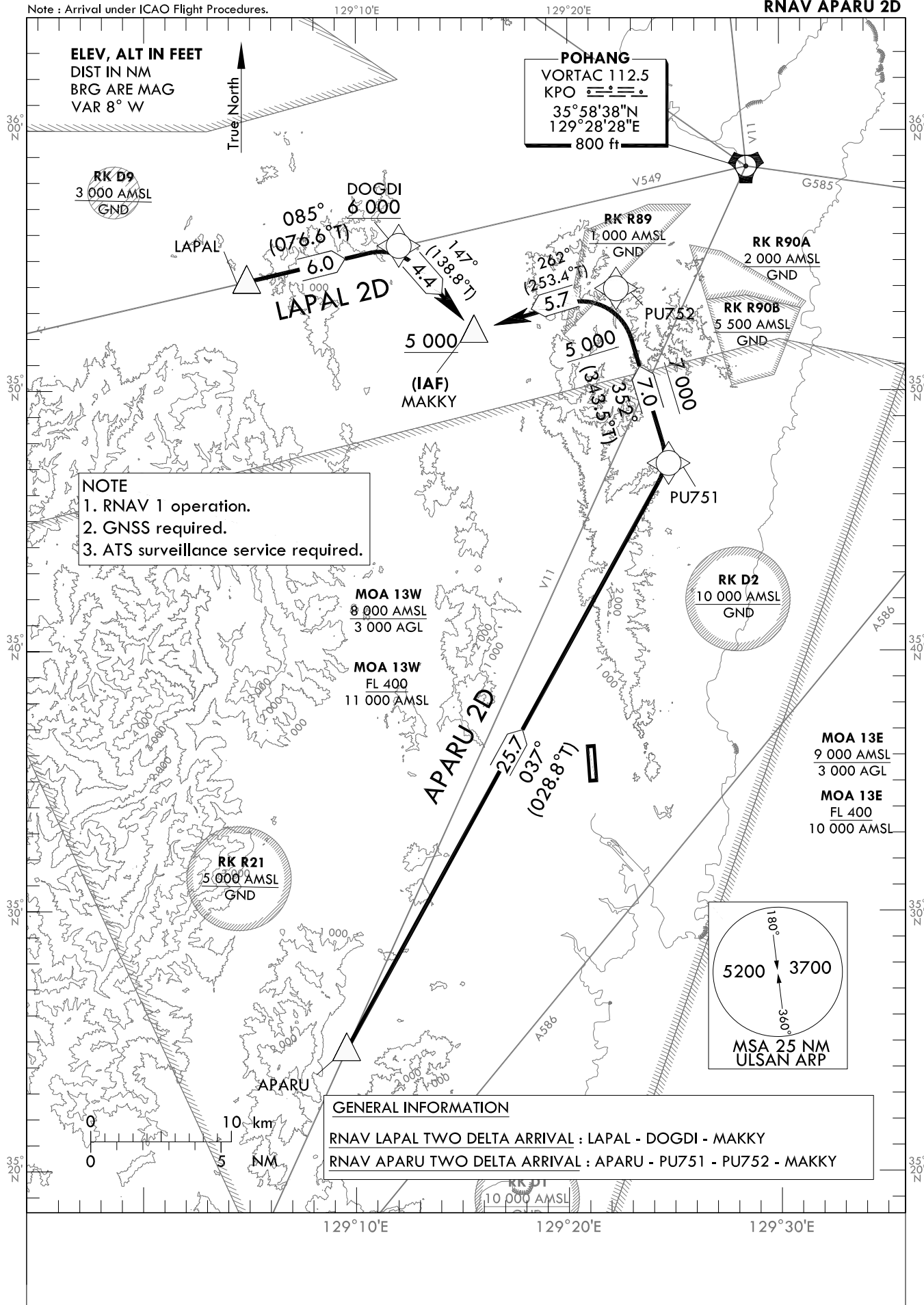
STANDARD ARRIVAL CHART
INSTRUMENT(STAR) - ICAO

TRANSITION ALT 14 000
TRANSITION LVL FL 140

POHANG APP 124.25
120.2
ULSAN TWR 118.75

ULSAN/Ulsan(RKPU)
RWY 18
RNAV LAPAL 2D
RNAV APARU 2D

Note : Arrival under ICAO Flight Procedures.



Change : Information of course/track, coordinates for KPO VORTAC and Withdrawal of USN VOR/DME information.

ULSAN/Ulsan(RKPU)
RWY 18
RNAV LAPAL 2D, RNAV APARU 2D

AERONAUTICAL DATA TABULATION

Standard Instrument Arrival Procedure Coding Tables

RNAV LAPAL 2D

Serial Number	Path Descriptor	Waypoint Identifier	Fly-over	Course/Track °M(°T)	Distance (NM)	Turn direction	Altitude (ft)	Speed (kt)	Coordinates	VPA/RDH	Navigation specification	Remarks
001	IF	LAPAL	-	-	-	-	-	-	35°54'12.6"N 129°04'52.0"E	-	RNAV 1	-
002	TF	DOGDI	-	085(076.6)	6.0	-	+6 000	-	35°55'36.2"N 129°12'03.2"E	-	RNAV 1	-
003	TF	MAKKY	-	147(138.8)	4.4	-	+5 000	-	35°52'18.8"N 129°15'35.8"E	-	RNAV 1	IAF

RNAV APARU 2D

Serial Number	Path Descriptor	Waypoint Identifier	Fly-over	Course/Track °M(°T)	Distance (NM)	Turn direction	Altitude (ft)	Speed (kt)	Coordinates	VPA/RDH	Navigation specification	Remarks
001	IF	APARU	-	-	-	-	-	-	35°24'42.1"N 129°09'32.1"E	-	RNAV 1	-
002	TF	PU751	-	037(028.8)	25.7	-	-	-	35°47'13.4"N 129°24'46.2"E	-	RNAV 1	-
003	TF	PU752	-	352(343.5)	7.0	-	+7 000	-	35°53'56.6"N 129°22'19.1"E	-	RNAV 1	-
004	TF	MAKKY	-	262(253.4)	5.7	-	+5 000	-	35°52'18.8"N 129°15'35.8"E	-	RNAV 1	IAF

Change : Information of course/track for PU752(351° → 652°) and MAKKY(261° → 262°).

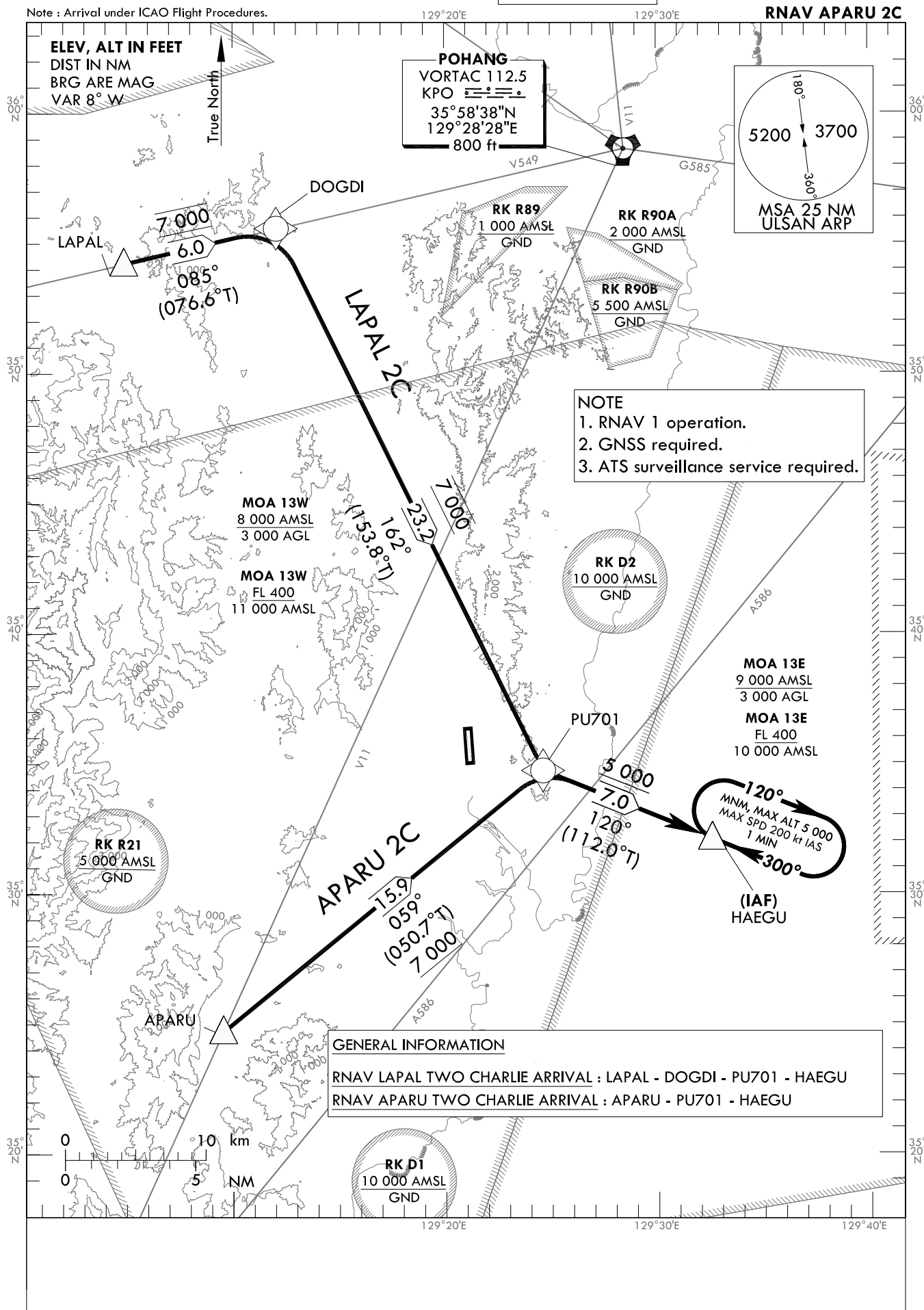
STANDARD ARRIVAL CHART
INSTRUMENT(STAR) - ICAO

TRANSITION ALT 14 000
TRANSITION LVL FL 140

POHANG APP 124.25
120.2
ULSAN TWR 118.75

ULSAN/Ulsan(RKPU)
RWY 36
RNAV LAPAL 2C
RNAV APARU 2C

Note : Arrival under ICAO Flight Procedures.



Change : Information of coordinates for KPO VORTAC and Withdrawal of USN VOR/DME information.

ULSAN/ULsan(RKPU)

RWY 36

RNAV LAPAL 2C, RNAV APARU 2C

HOLDING PROCEDURE

AERONAUTICAL DATA TABULATION

Standard Instrument Arrival Procedure Coding Tables

RNAV LAPAL 2C												
Serial Number	Path Descriptor	Waypoint Identifier	Fly-over	Course/Track °M(T)	Distance (NM)	Turn direction	Altitude (ft)	Speed (kt)	Coordinates	VPA/ RDH	Navigation specification	Remarks
001	IF	LAPAL	-	-	-	-	-	-	35°54'12.6"N 129°04'52.0"E	-	RNAV 1	-
002	TF	DOGDI	-	085(076.6)	6.0	-	@7 000	-	35°55'36.2"N 129°12'03.2"E	-	RNAV 1	-
003	TF	PU701	-	162(153.8)	23.2	-	@7 000	-	35°34'44.8"N 129°24'35.3"E	-	RNAV 1	-
004	TF	HAEGU	-	120(112.0)	7.0	-	+5 000	-	35°32'06.7"N 129°32'32.3"E	-	RNAV 1	IAF

RNAV APARU 2C												
Serial Number	Path Descriptor	Waypoint Identifier	Fly-over	Course/Track °M(T)	Distance (NM)	Turn direction	Altitude (ft)	Speed (kt)	Coordinates	VPA/ RDH	Navigation specification	Remarks
001	IF	APARU	-	-	-	-	-	-	35°24'42.1"N 129°09'32.1"E	-	RNAV 1	-
002	TF	PU701	-	059(050.7)	15.9	-	+7 000	-	35°34'44.8"N 129°24'35.3"E	-	RNAV 1	-
003	TF	HAEGU	-	120(112.0)	7.0	-	+5 000	-	35°32'06.7"N 129°32'32.3"E	-	RNAV 1	IAF

HOLDING PROCEDURE

Holding Identification	Path Descriptor	Waypoint Identifier	Fly-over	Course/Track °M(T)	Time (min)	Turn direction	Altitude (ft)	Speed (kt)	Coordinates	VPA/RDH	Navigation specification	Remarks
RNAV LAPAL 2C	HM	HAEGU	Y	300 (292.1)	1.0	R	@5 000	-200	35°32'06.7"N 129°32'32.3"E	-	RNAV 1	-
RNAV APARU 2C	HM	HAEGU	Y	300 (292.1)	1.0	R	@5 000	-200	35°32'06.7"N 129°32'32.3"E	-	RNAV 1	-